

CHELMSFORD

ART

SOCIETY

FOUNDED IN 1970

# NEWSLETTER

LOCAL ARTS NEWS ❖ FEBRUARY 2008



"New England Farmhouse Cold Spring Farm " by Nita Casey

## February Demonstration

The Chelmsford Art Society is featuring Nita Casey who will demonstrate oil painting. The artist born and raised in France now lives in Pepperell, MA where she operates "The Gingerbread Gallery", 28 Main St. A very motivated person, she considers herself fortunate to live in a beautiful New England town. "The beauty is all around me, from mountains to the seashore and a little bit of Old World feeling". She gets her ideas while driving the back roads where she discovers countless scenes that intrigue her.



The Gingerbread Art Studio

Nita attended the famed *Ecole des Beaux Arts* at a young age and went on to the *Ecole de Dessin* in Paris. She is a former president of the Chelmsford Art Society, and has won many prizes and had many solo art shows. Just a few years ago, she won the honor of depicting Camp David which was used for the official Christmas card signed by President, and Mrs. Clinton. Presently she has a blog on the internet where she sketches or paints a picture most every day. Check it out

[www.gingerbreadartstudio.blogspot.com](http://www.gingerbreadartstudio.blogspot.com)

The Chelmsford Art Society will meet on Tuesday, February 26, 2008 at 7 PM at the Old Town Hall, 1 North Road, Chelmsford, MA.

Everyone welcome. For information: 978.251.3971.



## Art on the Common

Due to a shortage of manpower (artist power) we will not be holding our *Art on the Common* this spring. If you would like to become involved and help to get next year's event going, please let us know!



## Join our Board!

We will be electing new board members in March. Please consider this your opportunity to become involved and help make a difference. The CAS Board meets once a month from September through June. The experience is invaluable!

*Available CAS Boardmember Seats & Responsibilities:*

**Vice President** assists the President and other board members.

**Exhibits** person schedules artists at local exhibit spaces.

**Hospitality** coordinates the refreshments at monthly demonstrations.

**Newsletter** designs and produces the monthly newsletter.

**Secretary** takes notes at board meetings.

If this sounds like something you'd like to try, please call Claire Gagnon at 978.957.5058.

## CAS EVENTS

February 26, 2008  
**Nita Casey – Oil Painting**

March 25, 2008  
**Bernie Petruzzello –  
Charcoal Drawing**  
~ New Board Elections ~

April 29, 2008  
**Noredin Morgan –  
Digital Drawing**  
May 27, 2008  
**Mini Painting Workshop**

# IN THE GALLERY

Mary E. O'Connell

## The Summer Place

20 Summer Street  
February – Jeffery Stallard  
March – available  
April – Claire Gagnon  
May – Leslie Russell

## The Town Offices

50 Billerica Road  
February – photography exhibit of  
the works of Stephen Curran,  
Vera Kaufman, and Elaine Seidel

Consider showing your work!  
Please contact Mary E. O'Connell,  
moconnell98@comcast.net



### 2007-2008 CAS Board Members

(front-back, left-right) Gopika Narula, Claire Gagnon, Kathy Clericuzio, Helen Moriarty, Pat Burns, Karen Tarr, Mary O'Connell, Deb Breton-Robinson, Jim Rainville, Trina Teele, John Giannino, Eileen Byrne

President	978.957.5058
<b>Claire Gagnon</b>	creativartist@aol.com
Vice President	978.362.3015
<b>Kathy Clericuzio</b>	kathda930@aol.com
Treasurer	978.809.9465
<b>Gopika Narula</b>	gopika.narula@gmail.com
Assets	
<b>Sandra Galloway*</b>	978.251.7254
Exhibits	978.392.3618
<b>Mary E. O'Connell</b>	moconnell98@comcast.net
Hospitality	
<b>Pat Burns</b>	978.256.3841 patB4@comcast.net
<b>Karen Tarr</b>	978.433.2099 ktarrchris@charter.net
Membership	978.663.0709
<b>John Giannino</b>	gianninojr@comcast.net
Newsletter	978.244.0410
<b>Trina Teele</b>	teele.design@comcast.net
Programs/Publicity	978.251.3971
<b>Helen Moriarty</b>	hsmoril46@aol.com
Publicity/Secretary	978.809.9465
<b>Gopika Narula</b>	gopika.narula@gmail.com
Scholarship	
<b>Jen Heater*</b>	978.256.3807
<b>Deb Bretton-Robinson</b>	978.251.0388
Webmaster	978.454.1892
<b>Eileen Byrne</b>	webmaster@chelmsfordartsociety.org

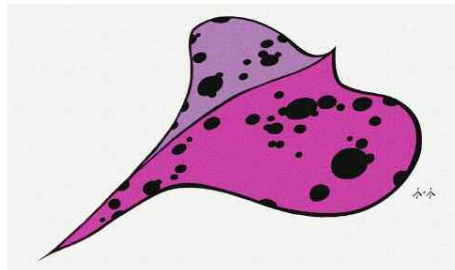
# NEWSWORTHY

**Autism Awareness All in the Family**  
Art Exhibit at the Ayer Lofts Art  
Gallery February 1-29. Join us Feb. 21  
6-9 PM. 172 Middle St. Lowell.

**Bob Stegmaier**, photographic artist,  
was accepted into the "Shape" juried  
art show at the *Cambridge Art  
Association - Kathryn Schultz Gallery*.  
The opening reception is on Saturday  
Feb 9<sup>th</sup> from 12 to 2 PM and the  
exhibit is on display from January 29  
to February 26. His accepted work is a  
fine art figure study. Please stop by for  
a look see.

**"The Luminous Landscape"**  
At *The Dickinson Art Gallery*, 1132  
Main Street, So. Weymouth, MA,  
February 16<sup>th</sup> - 29<sup>th</sup>, *Opening  
Reception: Sunday, Feb. 24<sup>th</sup> 1-3 PM*  
Featuring the artwork of, Charyl  
Weissbach, Lindsay Bentis, Janet  
Bartlett Goodman, Dot Simpson  
Krause, Julie Shaw-Lutts, and **Tracy  
Spadafora**. The gallery is open from  
Wednesday to Saturday, 10-5:30 PM,  
and Sundays from 12-5 PM  
781.331.3384.  
[www.dickinsonartgallery.com/](http://www.dickinsonartgallery.com/)

Come see **"Pen and Ink Abstract  
Flowers"** by Ara Hagopian, an exhibit  
showing at the Chelmsford Public  
Library for the month of February.  
Also, "Don't Tell Yourself No" a chat  
with the artist takes place on  
February 28 at 7PM in the  
McCarthy Room.



**CAS Membership Books** Please call  
our Membership Board representative,  
John Giannino at 978-663-0709 or  
email gianninojr@comcast.net, if  
you have not received your  
membership book.

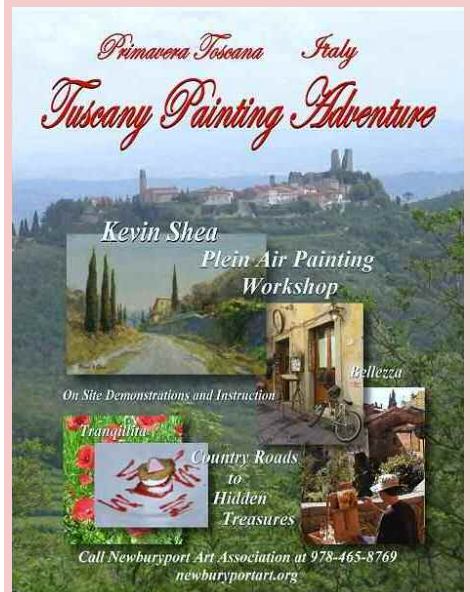
# CLASSES & WORKSHOPS

## Colleen Sgroi Gallery

Six-week sessions, \$165. Classes  
include *Acrylic Painting* with Tom  
Gill, and *Realism Drawing* with  
Michael Vieira. Check website  
[www.sgroifolkart.com](http://www.sgroifolkart.com) for times and  
kids classe or call 978.667.1009. Next  
Session - February 25<sup>th</sup> thru April 4<sup>th</sup>

**Tea's Art Studio** Check out what's  
happening at this great Bedford  
space. Tea has pay as you go  
drawing and painting at various  
times. Visit [www.teasartstudio.com](http://www.teasartstudio.com)  
or call 781.275.7118 for more info.

NAA's International Painting  
Workshop: **Tuscany, Italy Plein  
Air Painting with Kevin Shea**  
April 25-May 10, 2008



**Cords, Braids, Kumihimo & Bead  
Edge Design Neckpieces**, a work-  
shop by Marion Hunziker-Larsen  
([www.jewelsinfiber.com](http://www.jewelsinfiber.com)) March 29-  
30, 10 AM - 5 PM, at the LACS,  
\$215. [www.lexingtonma.org/LACS](http://www.lexingtonma.org/LACS)  
781.862.9696

**Newsletter delivery** issues should be  
made known to our Membership Board  
representative, John Giannino, call  
978-663-0709 or email  
gianninojr@comcast.net



# CALL FOR ART

The Chelmsford Historical Society and the Chelmsford Library will host a special exhibit this spring entitled, **"Our Community: Who We Are - Snapshots of Chelmsford,"** to celebrate the people and places of Chelmsford. You are invited to participate in this special exhibition which opens in May at the *Ralph Parlee Agricultural Center* at the *Barrett Byam Homestead* and moves to the Library for the month of June. Enter a photo of your grandmother or newest grandchild, your family outings, celebrations, special occasions and everyday happenings. Pictures from people who live or work in Chelmsford are eligible for this juried exhibition. You may enter as many as 5 photographs. Submit photos and a brief statement explaining the events and people pictured to Susan Gates, 7 Trotting Road, Chelmsford 01824 or email a digital image (350 dpi JPEG) to [sjuliangates@comcast.net](mailto:sjuliangates@comcast.net) or drop off photo submissions at the Library's Community Services Department. **DO NOT SEND YOUR ONLY COPY BY MAIL.** Be sure to include your name, address, telephone number and email address. Deadline is April 15, 2008. Photos will be ready to pick up at the Library (Community Services Dept) at the end of the June library exhibit. Questions? Call Susan Julian Gates, 978.250.9161.



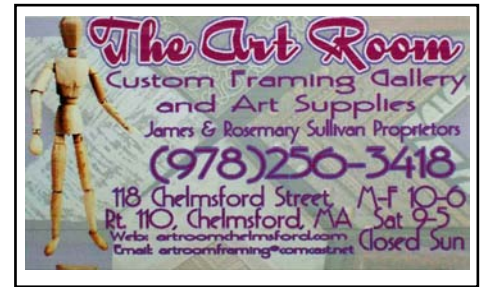
**"Going to the Dogs" Show**  
*Brush Art Gallery and Greyhound Welfare* Deadline: February 22, 2008. Artwork submitted to this exhibition is not limited to greyhounds, but must be related to dogs - paintings, photography, sculpture, high-end crafts, etc. For complete details and prospectus call 978.459.7819 or visit [www.thebrush.org/greyhounds.htm](http://www.thebrush.org/greyhounds.htm)



**Brush Art Gallery Members' Show 2008:** A Juried Exhibition  
Deadline for Entry: February 20 (postmarked.) Running from March 9<sup>th</sup> to April 5<sup>th</sup>, this is an exhibition of diverse works submitted by artist members of the *Brush Art Gallery & Studios*. (Become a *Brush Art Gallery* member and download an application.) 1<sup>st</sup>, 2<sup>nd</sup> and 3<sup>rd</sup> place winners are awarded a well-publicized group show, *The Winners' Circle*. For complete details, please download our prospectus. [www.thebrush.org](http://www.thebrush.org) or call 978.459.7819

-----  
**2008 Westford Regional Art Event** *Parish Center for the Arts* will be March 28<sup>th</sup>-30<sup>th</sup>. Everyone's invited to participate! Display your own art or simply enjoy the talent of local adults, children, professionals and amateurs. Opening reception includes awards, prizes, music and refreshments. An impressive representation of media is displayed; many pieces available for sale. All entries will be judged and prizes will be awarded. *Receiving:* Deliver artwork to the PCA, Monday, March 24<sup>th</sup>, 7-9 PM., or Tuesday, March 25<sup>th</sup>, 9:30-1:30 during the day. For more info contact the PCA at 978.692.6333 or visit [www.westford.com/pca/gallery\\_wra\\_e\\_details.htm](http://www.westford.com/pca/gallery_wra_e_details.htm)

-----  
**Hawthorn Suites Hotel** in N. Chelmsford is looking for artists to display their art in the lobby area. If you are interested in this opportunity, please contact Jennifer Hogan directly her at 978.256.5151, Fax: 978.256.6633



"Art enables us to find ourselves  
and lose ourselves  
at the same time."

Thomas Merton

## HAPPENINGS

Helen Moriarty

"Granite State Opera" will air on Chelmsford TeleMedia on Channel 8, Thursdays at 7:30 PM and Saturdays at 8 PM, throughout the month of February, 2008. I was invited to a party in New Hampshire where two opera singers entertained.

Lowell Cable TV, Channel 8 will be showing "Chinese Brush Painting with Yahong Shen" on Wednesday, 5 PM and Friday, 5:30 PM. This show features the artist brush painting a beautiful floral picture.

Billerica Access TV, Channel 8 will be showing various "Happenings" programs on Sunday 7:30 PM, Monday 4 PM and Friday 1 PM.

On the *Message Board* of the Channel 8, Chelmsford Cable TV, can be seen a *Mini Art Show* featuring paintings by February Oil demonstrator, Nita Casey.

"Art is much less important than life,  
but what a poor life without it."

Robert Motherwell

-----  
*Newsletter Submissions.* Send your news to Trina Teele at [teele.design@comcast.net](mailto:teele.design@comcast.net) or call 978-244-0410. The Newsletter should come out the second week of each month throughout the CAS year (excepting summer) so plan accordingly. Submission Deadline: last day of the month.

CHELMSFORD



SOCIETY

FOUNDED IN 1970

P.O. Box 211  
N. Chelmsford,  
Massachusetts  
01863

CHELMSFORD



SOCIETY

FOUNDED IN 1970

## Application for membership to the Chelmsford Art Society

*Please print clearly*

Date \_\_\_\_\_

### New Membership

Name \_\_\_\_\_

Address \_\_\_\_\_

City \_\_\_\_\_ State \_\_\_\_\_ Zip \_\_\_\_\_

Phone \_\_\_\_\_

E-Mail \_\_\_\_\_

Website \_\_\_\_\_

Preferred media/style of interest:  
\_\_\_\_\_

Please add my email and URL to CAS website

Bring application and fee to our monthly CAS meetings.  
Last Tuesday of each month (excluding summer)  
7:00 pm, Old Town Hall Chelmsford, 1 North Rd.

For more information, visit our website at [www.chelmsfordartsociety.com/](http://www.chelmsfordartsociety.com/) or  
contact Claire Gagnon at 978.957.5058 or at [creativartist@aol.com](mailto:creativartist@aol.com)  
Fees are payable on a yearly basis and are due by April 1<sup>st</sup> of each year.

### Renewal of Membership

Name \_\_\_\_\_

*Please update any personal information  
using the previous column.*

#### Fees:

Make checks payable to Chelmsford Art Society

Single \$20

Family \$30

Senior (60+) \$15

Student \$15

Donation to the scholarship fund. \$ \_\_\_\_\_

Or mail to:

Chelmsford Art Society  
P.O. Box 211  
North Chelmsford, MA 01863

Please save paper and email me  
my newsletter!