



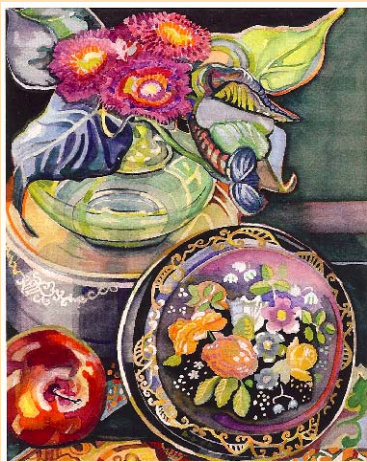
## October Demonstration



"Swimming Birds" by  
 Deirdre McCullough Grunwald

The Chelmsford Art Society presents **Deirdre McCullough Grunwald**, a New England artist whose work appears in private and corporate collections. She is a member of the New England Watercolor Society and The Cambridge Art Association. Her paintings are shown regularly throughout New England.

Grunwald's work is primarily a journey that explores ancient pattern and how it links to dream, contemporary abstraction and other cultures.



"Still Life #2" by  
 Deirdre McCullough Grunwald

**2009-2010 CAS Board Members**

With reference to the linkage between ancient pattern and contemporary abstraction, Grunwald's work is rooted in the believe that beyond the great exterior surface beauty of Celtic pattern there is built into its bedrock structure a foundation in sacred geometry that can generate contemporary abstract paintings.

Deirdre McCullough Grunwald will hold a watercolor workshop on Tuesday, October 27, 2009 at 7:00 PM in the Old Town Hall, Chelmsford. Bring your own paints or some will be provided. Everyone is welcome! For information call 978-251-3971.

### A Word from our President

A reminder! Hope everyone is painting for the December Library Art Show. Two pieces of artwork per member will be accepted. Keep in mind that six pictures will be selected to have a flower arrangement design for the chosen pictures. There will be ribbon awards for CAS members and some for the Florists as well as cash awards.

The Golden Chain Garden Club members will choose the pictures that appeal to them for the arrangements on December 1. Receiving at the Library will be from 5:30 - 6:30 PM.

The flower arrangements will be ready to be displayed at the reception on Saturday, December 12 from 2 - 4.

There will be food and music at the reception. This December - January Library Show always is a special feature during the Holiday Season.

Helen Moriarty  
 President

## CAS Programs 2009 - 2010

- October 27, 2009 (Tues.)**  
 Deirdre McCullough Grunwald - Watercolor
- November 24, 2009 (Tues.)**  
 Joyce Audy Zarin - Metal Sculpture
- December 1, 2009 (Tues.)**  
 Holiday Member Show Library Hanging - Chelmsford Library  
 5:30 - 6:30 p.m.
- December 12, 2009 (Sat.)**  
 Reception at Chelmsford Library  
 2-4 P.M.
- January 21, 22, 23, 2010**  
 Pick up and sign out art at Library Desk
- January 26, 2010 (Tues.)**  
 Andrew Kusmin - Critique
- February 23, 2010 (Tues.)**  
 Paula Richards - Oil
- March 30, 2010 (Tues.)**  
 Peter Kostolacos - Art Restoring
- April 27, 2010 (Tues.)**  
 To be announced
- May 25, 2010 (Tues.)**  
 Mini Painting Workshop

These programs are free of charge. Unless otherwise noted, meetings will be held at the Old Town Hall, 1 North Road, Chelmsford, MA. 7:00 P.M.

### IN THE GALLERY

**The Summer Place**  
 20 Summer Street, Chelmsford  
 December - Available  
 January - Available  
 February - Available  
 March - Available

**The Town Offices**  
 50 Billerica Road, Chelmsford  
 November - Available  
 December - Available  
 January - Available  
 February - Available  
 March - Available

Consider showing your work!  
 Please contact Norma Vonfricken at  
 orchidtwenty@yahoo.com or  
 978.458.3394.

**President: Helen Moriarty**

978-251-3971

[hsmori146@aol.com](mailto:hsmori146@aol.com)

**Vice President – Claire Gagnon**

978-957-5058

[creativartist@aol.com](mailto:creativartist@aol.com)

**Treasurer: Gopika Narula**

978-809-9465

[gopika.narula@gmail.com](mailto:gopika.narula@gmail.com)

**Assets: Sandra Galloway**

978-251-7254

[mschief93@aol.com](mailto:mschief93@aol.com)

**Exhibits: Norma Vonfricken**

978-458-3394

[orchidtwenty@yahoo.com](mailto:orchidtwenty@yahoo.com)

**Hospitality: Namita Agmi**

617-320-1471

[namita\\_miglani@yahoo.com](mailto:namita_miglani@yahoo.com)

**Membership: Tracy Newman**

978-250-6764

[etoonin@comcast.net](mailto:etoonin@comcast.net)

**Newsletter: Margo Kelley**

978-371-0731

[margo@PaintingsByMargo.com](mailto:margo@PaintingsByMargo.com)

**Programs/Publicity: Pat Burns**

978-649-4243

[Pat.B4@verizon.net](mailto:Pat.B4@verizon.net)

**Special Publicity: Bob Stegmaier**

978-251-2524 (cell 917-297-0008)

[imagekeepers@juno.com](mailto:imagekeepers@juno.com)

**Secretary: Esther Donlon**

508-482-8963

[fdonlon@comcast.net](mailto:fdonlon@comcast.net)

**Scholarship:**

**Jen Heater**

978-256-3807

[rippart@aol.com](mailto:rippart@aol.com)

**Deb Bretton Robinson**

978-251-0388

[brettonarts@hotmail.com](mailto:brettonarts@hotmail.com)

**Webmaster: Eileen Byrne**

978-454-1892

[webmaster@chelmsfordartsociety.com](mailto:webmaster@chelmsfordartsociety.com)

### Newsletter Submissions

Do you have any news you would like to share with CAS members? Send it to Margo Kelley at [margo@paintingsbymargo.com](mailto:margo@paintingsbymargo.com). The Newsletter comes out the second week of each month throughout the CAS year (except during the summer months). Submission deadline: last day of the month.

## HAPPENINGS

Helen Moriarty

**Chelmsford** - "Critique by Beth Patterson" will air on Channel 8, Thursdays at 7:30 PM and Saturdays at 8 PM, throughout the month of October, 2009. Noted artist, Beth Patterson critiques the CAS members' art work.

On the **Message Board of Channel 8, Chelmsford Cable TV**, can be seen a Mini Art Show featuring artwork by October demonstrator, Deirdre McCulloch Grunwald.

**Lowell Cable TV** will be showing "Art Workshops" for the month of **October, 2009 on Wednesday at 5:00 PM Channel 95 and Friday at 4 PM Chan. 8.**

**Billerica Cable TV Channel 8** also features on "Art Workshops", **Sunday at 7:30 PM, Monday at 4:00 PM and Friday at 1:00 PM.**

## Ribbon Cutting



To celebrate the opening of the Chelmsford Center for the Arts there will be a ribbon cutting/open house sponsored by the Chelmsford Center for the Arts Committee on Saturday, November 7 from 2-4 and a jazz concert from 7-9 (which will be ticketed). The Chelmsford Art Society is planning on having an informational table from 2 – 4. We plan to have our mini paintings for sale and probably have a small raffle. It should be exciting to have a Ribbon Cutting at the Old Town Hall to celebrate the Chelmsford Center for the Arts. To participate call Helen Moriarty at 978.251.3971.

## In The News



**Eileen Byrne**, stands in front of some paintings of cats at the show, "Herding Cats." Eileen, now CEO of the Brush Gallery in Lowell, presided over a very busy reception where donations were collected for the benefit of the Billerica Cat Care Coalition.



**Bruce Magnuson**, member of the Chelmsford Art Society and Cultural Council is pictured before his amazing photography of New England Scenes. He shared the show at the Chelmsford Adams Library.

**The North Andover Cultural Council and the Andover's Artist Guild** will be sponsoring a Fall event, **Fall Colors and Sounds**, at Rolling Ridge Retreat and Conference Center, 660 Great Pond Road, North Andover, MA on November 1 from 10-3: . We are inviting drama and choral groups to perform, artists to paint or show their works, and we will have fabulous food from Chef Tobias and an auction of the paintings from the June event as well new paintings from Sept 13. For more information contact Larry J Peacock [RevLPeacock@rollingridge.org](mailto:RevLPeacock@rollingridge.org) [www.rollingridge.org](http://www.rollingridge.org) 978-682-8815



*"Party Time"* – by Laurie Miller

**Exhibit by Laurie G. Miller --**

"Reflections on Fifty – 50 New Oil Paintings by Laurie G. Miller" – runs from October 1 – 31 at the Parish Center for the Arts, 10 Lincoln Street, Westford, MA. Painted on one-foot square canvases, Ms. Miller's work has been described as "quirky" and "whimsical" and will often bring a smile to your face. Gallery hours during October are Sundays 12 – 2 pm and by appointment. View Ms. Miller's artwork along with her thoughts on the creative process for each piece at [LaurieGMiller.blogspot.com](http://LaurieGMiller.blogspot.com). The PCA is located at 10 Lincoln Street, Westford, MA. Phone: 978-692-6333. Email: [pca@westford.com](mailto:pca@westford.com). Website: [www.westford.com/pca](http://www.westford.com/pca). The PCA Gallery is handicap accessible.



*"Overflow"* by Laurie Miller

**Lexington Arts and Crafts Society** will hold their Annual Fund Raising Arts and Crafts Fair Friday, October 23, 10 – 5, Saturday, October 24, 10 – 5 and Sunday October 25, 12 – 5. For more information and directions phone 781-862-9696 or visit [www.lexingtonma.org/LACS](http://www.lexingtonma.org/LACS).



Painting by Nan Quintin

**Nan T. Quintin's** acrylic and watercolor paintings will be on display at the Lawrence Library Art Gallery, 15 Main Street, Rt. 113, Pepperell, MA from Oct 10 thru Nov. 7, 2009 – Tues/Wed/Thurs 10 – 8, Fri. 10 – 5, Sat. 10 – 4. For more information [www.nanquintin.com](http://www.nanquintin.com) 978-433-9731 or [www.lawrencelibrary.org](http://www.lawrencelibrary.org) 978-433-0330.



Painting by Nan Quintin



**Priti Lathia** at her show at the Chelmsford Adams Library. At the well attended reception, she stands in front of some of her lovely artwork.

**Georgia Spanos**, owner and artist in residence of **The Gallery at Floral Arts**, invites you to visit her gallery upstairs in the Floral Arts Florist building, 129 Littleton Road, Westford, MA - 978-692-3350. Georgia exhibits artwork by many CAS members as well as other artists. The gallery is open on Thurs. – Sun. or by appointment.

## Membership

Don't forget to renew your membership with the Chelmsford Art Society (CAS) if you have not already done so. We are currently updating the CAS Member Book.

The membership dues are payable on April 1 of each year and membership runs through March 31. Our Member book is printed in the fall of each year. The 2009/2010 CAS Member Book will be mailed out to our members this October. Go green and consider signing up to receive the CAS newsletter via email. Visit our website at [www.chelmsfordartsociety.org](http://www.chelmsfordartsociety.org) for membership information. We have many upcoming programs to enjoy and opportunities to show your work, just check out our monthly newsletters, which begin in September and run through June! Thanks so much for your support and interest in the CAS!

Tracy Newman, Membership  
Chairman

CHELMSFORD

**ART**

SOCIETY

FOUNDED IN 1970

## Application for membership to the Chelmsford Art Society

*Please print clearly*

Date \_\_\_\_\_

### New Membership

Name \_\_\_\_\_

Address \_\_\_\_\_

City \_\_\_\_\_ State \_\_\_\_\_ Zip \_\_\_\_\_

Phone \_\_\_\_\_

E-Mail \_\_\_\_\_

Website \_\_\_\_\_

Preferred media/style of interest: \_\_\_\_\_

Please add my email and URL to CAS website

Bring application and fee to our monthly CAS meetings.

For more information, visit our website at [www.chelmsfordartsociety.com/](http://www.chelmsfordartsociety.com/) or contact Claire Gagnon at 978.957.5058 or at [creativartist@aol.com](mailto:creativartist@aol.com)

### Renewal of Membership

Name \_\_\_\_\_

*Please update any personal information using the previous column.*

#### Fees:

Make checks payable to Chelmsford Art Society

Single \$20

Family \$30

Senior (60+) \$15

Student \$15

Donation to the scholarship fund. \$ \_\_\_\_\_

Or mail to:

Chelmsford Art Society  
P.O. Box 211  
North Chelmsford, MA 01863

Please save paper and email me my newsletter!

